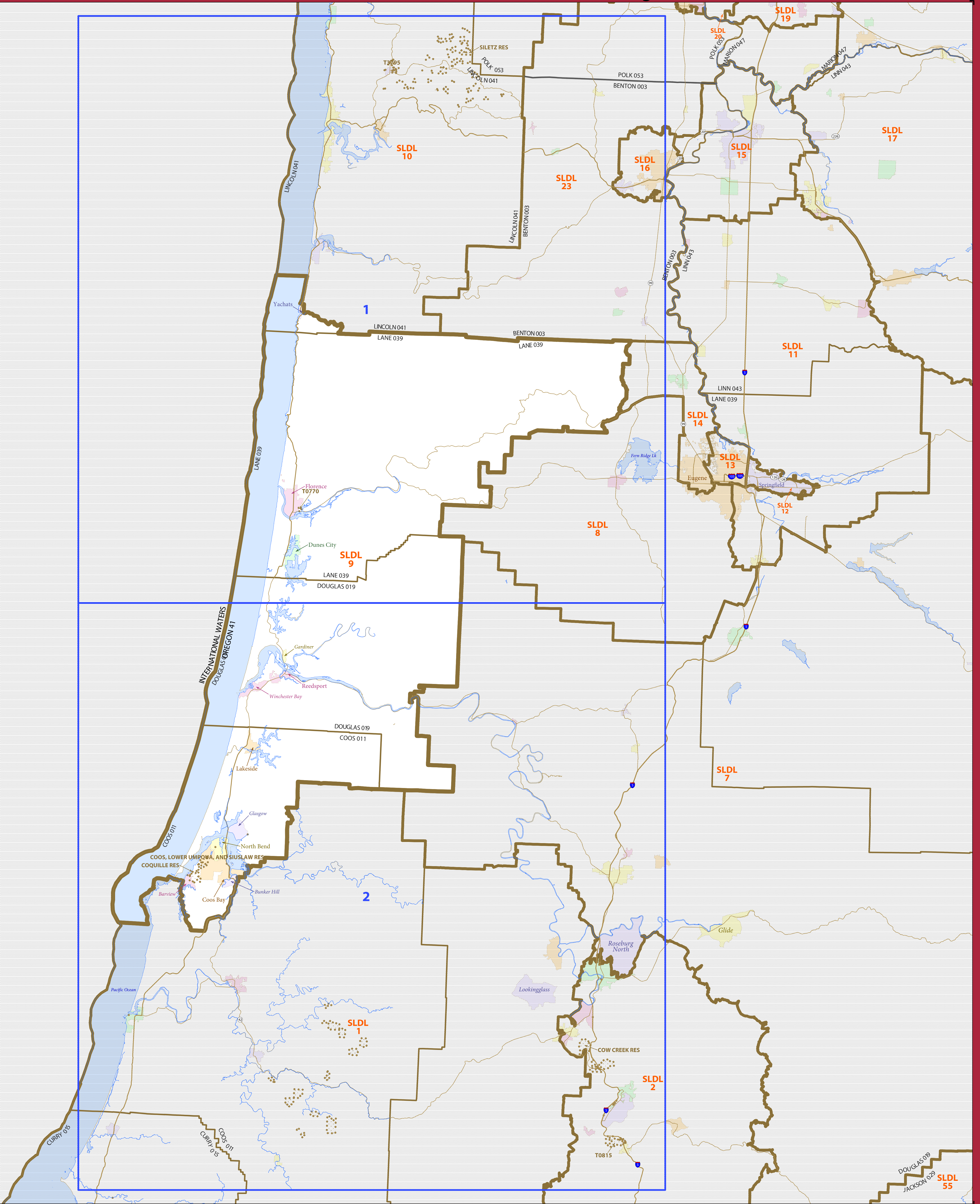


STATE LEGISLATIVE DISTRICT REFERENCE MAP: State House District 9 (Oregon)



SYMBOL DESCRIPTION	SYMBOL	LABEL STYLE
International	-----	CANADA
Federal American Indian Reservation	L'ANSE RES 1880
Off-Reservation Trust Land	T1880
State American Indian Reservation	Tama Res 9400
State Legislative District - Lower (House)	-----	SLDL 94
State (or statistically equivalent entity)	-----	NEW YORK 36
County (or statistically equivalent entity)	-----	ERIE 029
Minor Civil Division (MCD)	-----	Bristol town 07485
Consolidated City	MILFORD 47500
Incorporated Place ²	Davis 18100
Census Designated Place (CDP) ²	Incline Village 35100

DESCRIPTION	SYMBOL	DESCRIPTION	SYMBOL
Interstate	-----	Water Body	Pleasant Lake
U.S. Highway	-----	Outside Subject Area	-----
State Highway	-----		
Other Road	-----		
Railroad	-----		

Where international, state, county, and/or MCD boundaries coincide, the map shows the boundary symbol for only the highest-ranking of these boundaries.

1 MCD boundaries are shown in the following states in which some or all MCDs function as general-purpose governmental units: Connecticut, Illinois, Indiana, Kansas, Maine, Massachusetts, Michigan, Minnesota, Missouri, Nebraska, New Hampshire, New Jersey, New York, North Dakota, Ohio, Pennsylvania, Rhode Island, South Dakota, Vermont, and Wisconsin. (Note that Illinois and Nebraska have some counties covered by nongovernmental precincts and Missouri has most counties covered by nongovernmental townships.)

2 Place label color corresponds to the place fill color.
Label colors: Davis Davis Davis Davis Davis

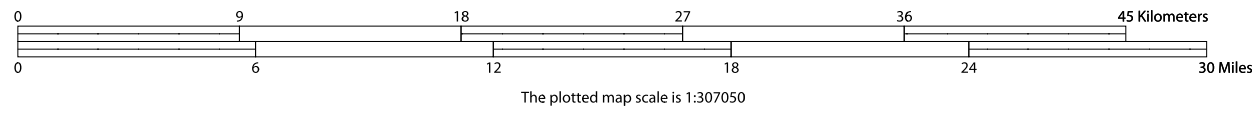
OFF-RESERVATION TRUST LAND NAMES
T0770 Coos, Lower Umpqua, and Siuslaw
T0815 Cow Creek
T3795 Siletz

State legislative districts are delineated based on the results from the 2010 Decennial Census; all other legal boundaries and names are as of January 1, 2010. The boundaries shown on this map are for Census Bureau statistical data collection and tabulation purposes only; their depiction and designation for statistical purposes does not constitute a determination of jurisdictional authority or rights of ownership or entitlement.

Geographic Vintage: 2010 Census (reference date: January 1, 2010)
Data Source: U.S. Census Bureau's MAF/TIGER database (BAS13)
Map Created by: Geography Division: May 18, 2013

U.S. DEPARTMENT OF COMMERCE Economics and Statistics Administration U.S. Census Bureau

Projection: Albers Equal Area Conic
Datum: NAD 83
Spheroid: GR80
1st Standard Parallel: 42 42 46
2nd Standard Parallel: 45 34 55
Central Meridian: -120 34 56
Latitude of Projection's Origin: 41 59 44
False Easting: 0
False Northing: 0



INDEX SHEET

Total Sheets: 3
Index Sheets: 1
Parent Sheets: 2

NAME: State House District 9
ENTITY TYPE: State Legislative District - Lower (House)
ENTITY CODE: 009
ST: Oregon (41)
CO: Coos (011), Douglas (019), Lane (039), Lincoln (041)

SLDL REF MAP INDEX
23504100000